

Remote Installer - Getting Started



Are you new to Remote Installer? This tutorial can be a good start point for you. It will give you features and user interface overview, explain concepts and show real usage examples. After reading of this tutorial you will be ready to use Remote Installer in your day-to-day work.

Table of Contents

[Introduction](#)

[How Remote Deployment Works?](#)

[Application Interface Overview](#)

[Get a List of Installed Applications](#)

[Remote Installation](#)

[Remote Uninstallation](#)

Introduction

If you are looking for the solution that will help you to automate software deployment tasks, you should try Remote Installer. It will give you few benefits. First - you can install and uninstall software remotely across the network. Second - you can make mass deployment simultaneously on multiple PCs. As the result you will dramatically reduce software management efforts and, finally, take the full control over software on client's PCs. It worth to mention that is extremely easy to use - you just need to spend 5 minutes for reading this tutorial in order to be ready for making remote deployments.

In scope of this tutorial Professional Edition will be used. If you would like to follow step-by-step instructions provided here, please make sure that you downloaded and installed right edition. Otherwise you can notice some missed features and different interface options.

How Remote Deployment Works?

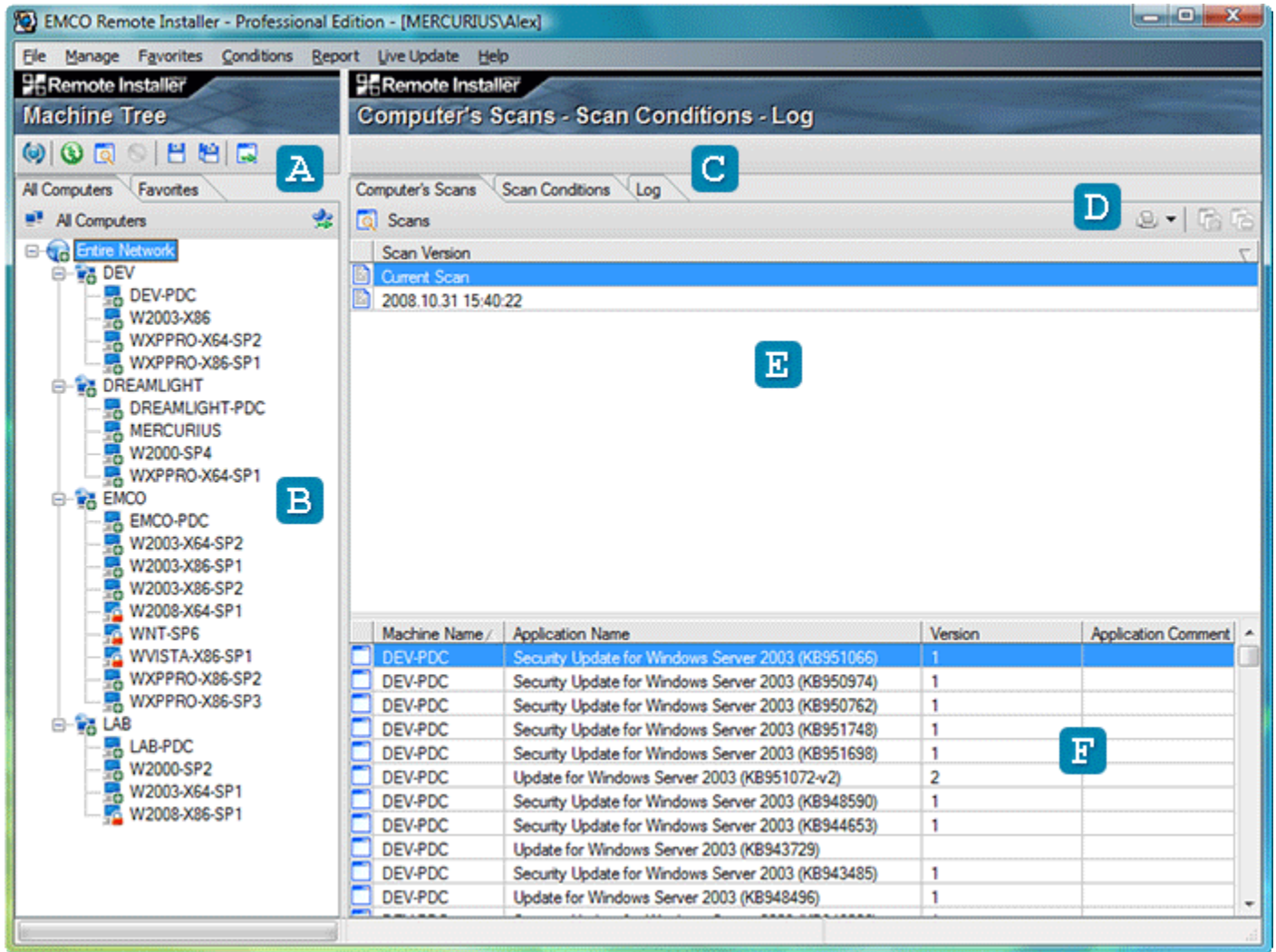
Using Remote Installer you can make mass software deployment to remote PCs. As every mass operation, deployment is performed in the automatic mode. It requires a special type of installation, ready for silent unattended deployment. Such installation should be preconfigured by particular values for all installation options and should not prompt any input from a user or interact with him in any way. Windows Installer packages (MSI files) fulfill these requirements and, thus, can be installed by Remote Installer.

What about other installation types and EXE installations in particular? Or installations that require user input? Could they be installed remotely by Remote Installer? Yes, but such installations should be repackaged into MSI format. You can convert existing installation info MSI automatically using [MSI Package Builder](#): you just need to follow installation process, select required options and enter prompted data - the rest is a task for MSI Package Builder.

You can start remote deployment having MSI package to be installed and target PC connected to the local network. It doesn't matter if you use domains or workgroups in your network - Remote Installer can operate in both environments. All what you have to do - scan the network to detect remote PCs, select those where you want to make installation, and execute installation process. In following sections you will see how it looks like on practice.

Application Interface Overview

It's supposed that you downloaded Remote Installer and installed it successfully. When you launch it at the first time, you see the *Trial* dialog that asks you to enter the license key or start evaluation period. Click on the *Evaluate* button in order to start 30-days evaluation and you will pass to the main application screen. Let's take a closer look on it. **Pic 1**



Pic 1. Main application screen

The main application screen is visually divided on two areas. At the left side of the screen you can find a toolbar **A** with the main application actions. You can launch network scan and installed application scan by pressing buttons on this toolbar. Under the toolbar, *All Computers* and *Favorites* tabs are located. *All Computers* tab displays *Machine Tree* **B** with a set of network PCs grouped by domains and workgroups. *Favorites* tab used to work with a group of selected PCs.

At the right side of the screen there are few views represented by the *Computer's Scans*, *Scan Conditions* and *Log* tabs. **C** Information about applications, installed on remote PCs is represented on the *Computer's Scans* tab. Displayed information depends on the selection made on the *Machine Tree*. If *Entire Network* is selected - the *Computer's Scans* tab shows applications installed on every PC in the network. If particular PC is selected - the *Computer's Scans* tab shows applications installed on this PC. The *Scan Conditions* tab used to set custom application detection criteria and the *Log* tab shows the detailed information about the status of remote operations execution.

Actions related with a active view, are represented on the toolbar. **D** For example, you can print a list of installed application by pressing correspondent button on the *Computer's Scans* tab. Information about installed applications is grouped by scans. Each scan represents a snapshot of installed application in the particular time. Available scans are shown by the upper table on the *Computer's Scans* tab. **E** A list of applications for the selected scan is displayed by the lower table. **F** There you can see there a full application name and version.

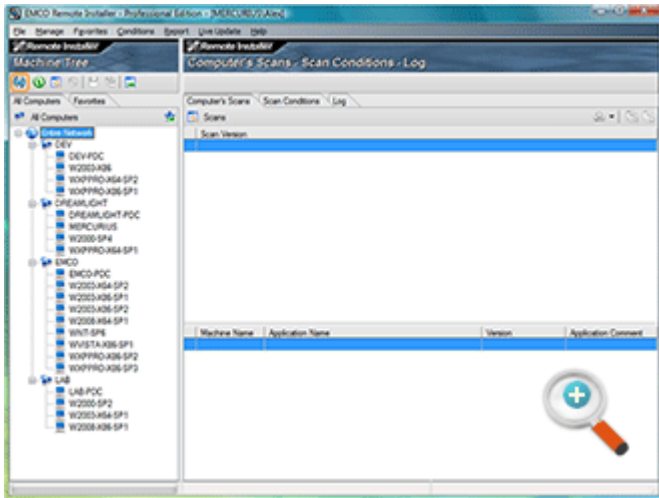
Get a List of Installed Applications

When you make remote installation, the first step is a targets choosing: selection a list of PCs where application should be installed. You need to ensure that required application isn't already installed on selected PCs and Remote Installer can help you with this.

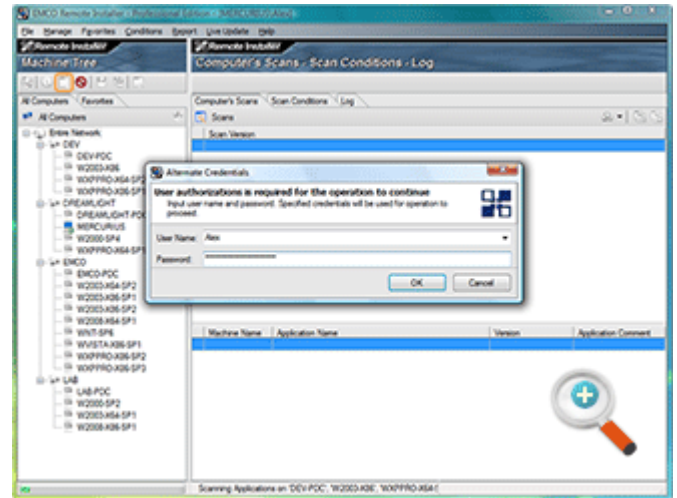
If you launch Remote Installer at the first time, you see the empty *Machine Tree*. We need to fill it by pressing *Scan Network* button on the toolbar. A local network will be automatically scanned to detect all available PCs. Scan result is

displayed by the *Machine Tree*, where all found PCs are located under their domains and workgroups. **Pic 2** When the network scan will be completed, you can select *Entire Network* node in the *Machine Tree* and press *Scan Applications* button on the toolbar to start applications scanning. If you don't have the correct permissions to access remote PCs, you will be prompted to enter administrative credentials. **Pic 3**

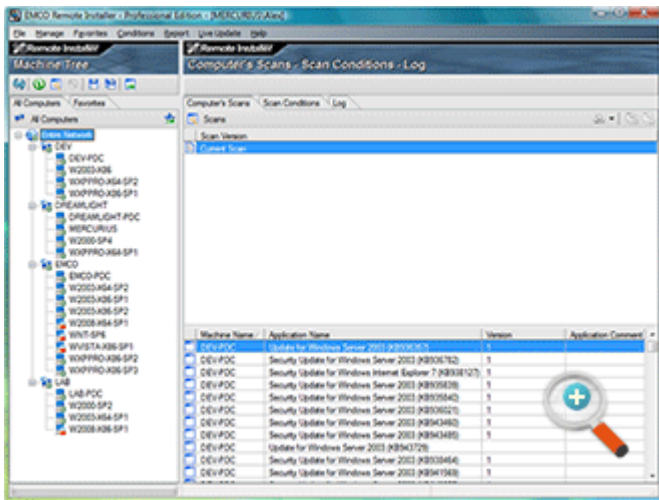
As soon as applications scan will be completed, you will see changes on the *Machine Tree* and *Computer's Scans*. **Pic 4** Applications scan status can be detected by PC icons in the *Machine Tree*: a green asterisk means that the scan was completed successfully; a red lock means that the scan was failed and you need rescan this PC with other credentials. On the *Computer's Scans* tab you can see a *Current Scan* entry in the *Scans* table and the detected applications list in the table below. A *Current Scan* is a temporary entry - its information will be overwritten at the next scan. But you can save scan results for further reference by pressing *Save All* button on the toolbar. **Pic 5**



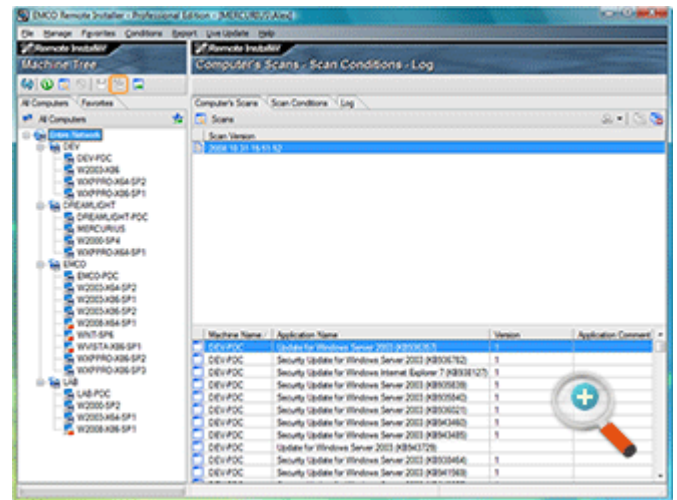
Pic 2. Scan Network button and network scan results



Pic 3. Scan Applications button and Credentials dialog



Pic 4. Applications scan results



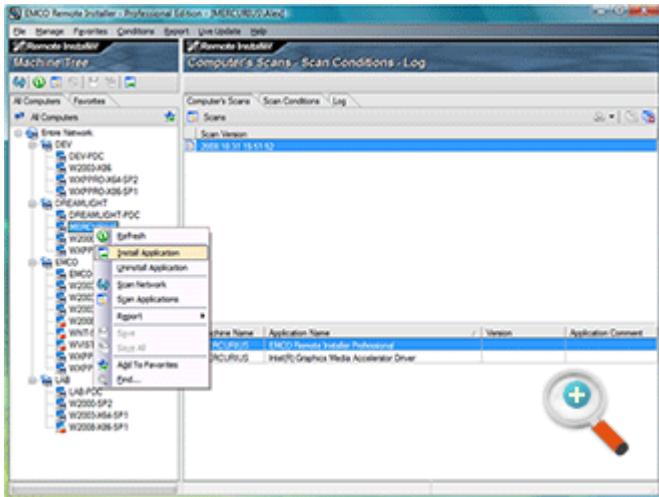
Pic 5. Saved scan information

At the next step we will install Adobe Reader 9 on remote PCs, so you can review applications scan results to ensure that Adobe Reader 9 is absent on the target PCs.

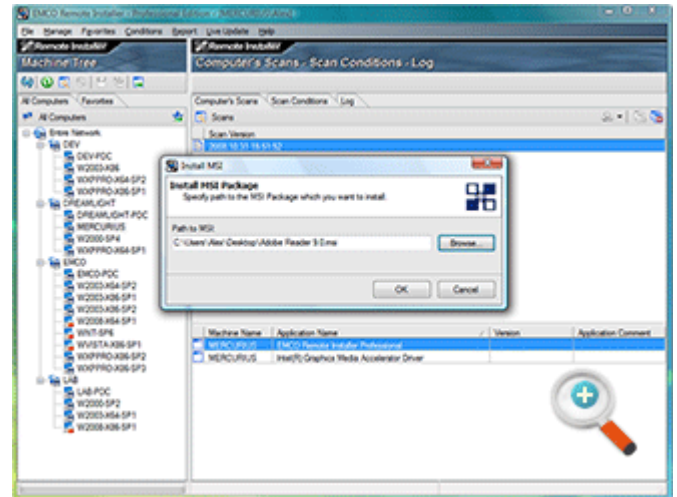
Remote Installation

In scope of this tutorial we will install Adobe Reader 9 to the remote PCs, using MSI package created by [MSI Package Builder](#), as described at [this tutorial](#). In order to make remote installation we should choose PCs in the *Machine Tree* where we want to deploy application. As usual, you can select one PC in the tree using the mouse or select multiple PCs using the mouse and *Ctrl/Shift* buttons. As soon as you selected required PCs, you can open context menu and choose *Install Application* item. **Pic 6** You will pass to the *Install MSI* dialog where you need to enter the path to the MSI file that should be installed. **Pic 7** Click on the *OK* button to start the installation process and see the progress on the status bar. As soon as installation will be completed you can switch to the *Log* tab and check the installation status.

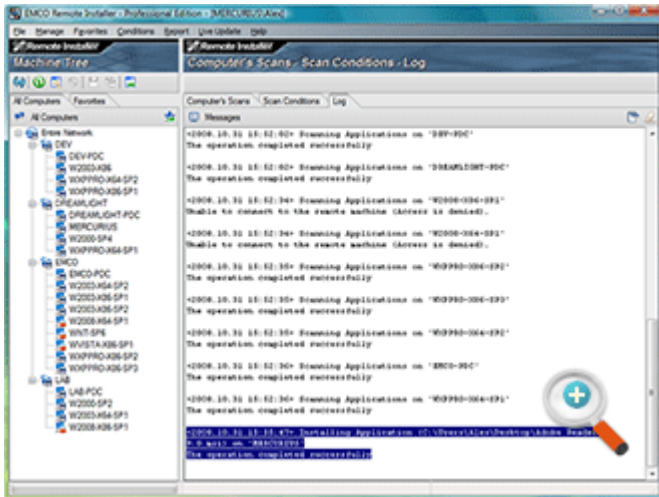
Pic 8



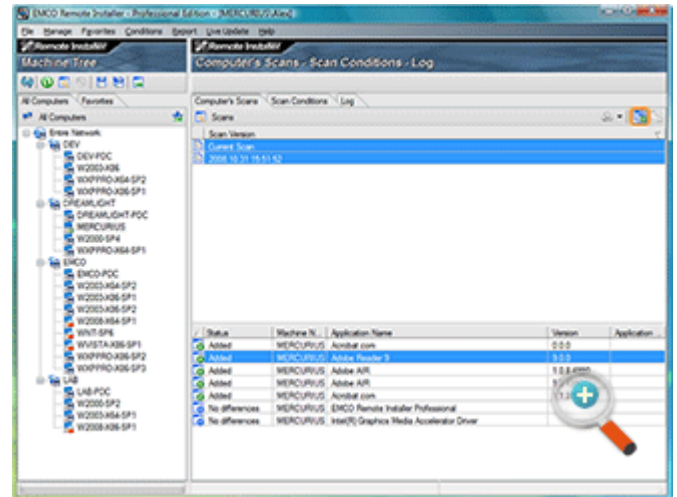
Pic 6. Install Application action



Pic 7. Install MSI dialog



Pic 8. Installation log



Pic 9. Scans comparison results

Now we need to ensure that installation was completed successfully. Return back to the *Computer's Scans* tab and press *Scan Applications* button. You will see a *Current Scan* entry appeared on the *Scan* table. Using mouse and *Ctrl* key select previously saved scan and the *Current Scan* entry, and press *Compare Scans* button on the *Computer's Scans* toolbar. **Pic 9** As the result at the lower table you will see scans comparison results, where Adobe Reader 9 entry is marked as *Added*. This means that installation was finished successfully and Adobe Reader 9 is ready to use on the remote PC. Press *Compare Scans* button once again to exit from compare view.

Remote Uninstallation

As the last step of this tutorial, we will uninstall recently installed Adobe Reader 9 from remote PCs. Using Remote Installer you can uninstall applications remotely, but only those ones which were installed by Remote Installer or Windows Installer, i.e. MSI installations. How can you detect if particular application can be uninstalled? It's really easy - you need to check application's icon in the scan results. Applications with a recycle bin on the icon can be uninstalled remotely.

